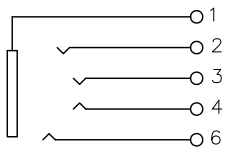
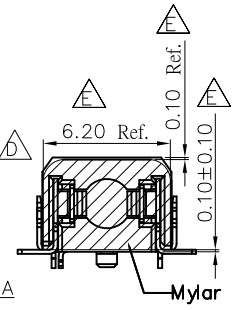
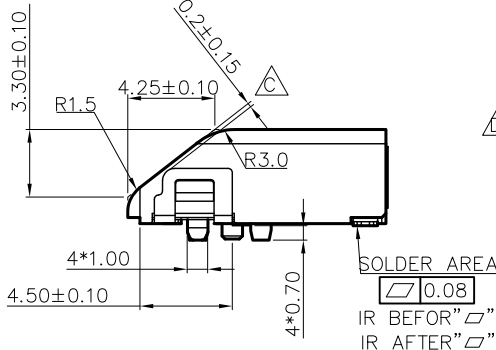
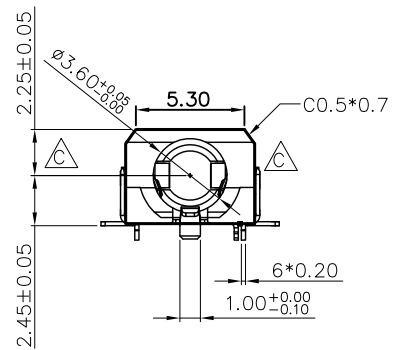
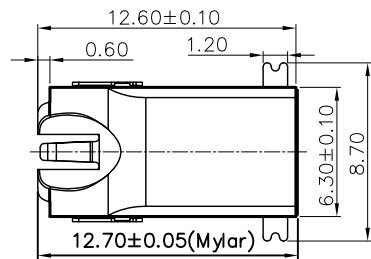


REV.	DESCRIPTION	DATE
C	N13'04040	APR 26, 2013
D	N13'05063	May 28, 2013
E	N13'11041	Nov 28, 2013



CIRCUIT DIAGRAM



MATERIALS

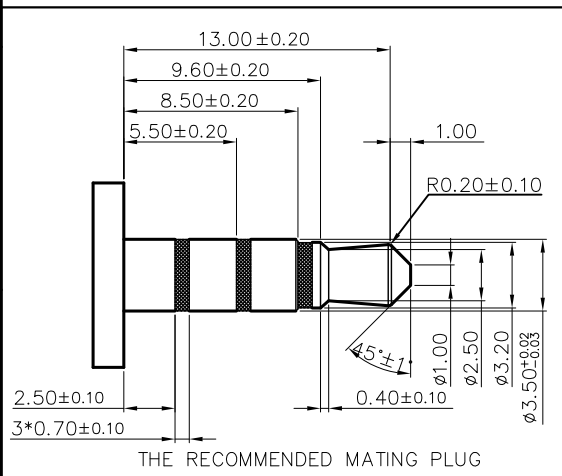
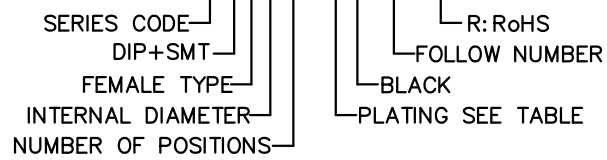
- HOUSING : LCP (UL 94V-0) BLACK.
- TERMINAL : C5191(1&2&6 TERMINAL)
PLATING : GOLD PLATED OVERALL.NICKEL
- TERMINAL : C2680(5 TERMINAL)
PLATING : GOLD PLATED OVERALL.NICKEL
- TERMINAL : SUS 301(3&4#TERMINAL)
PLATING : GOLD PLATED OVERALL.NICKEL

SPECIFICATION

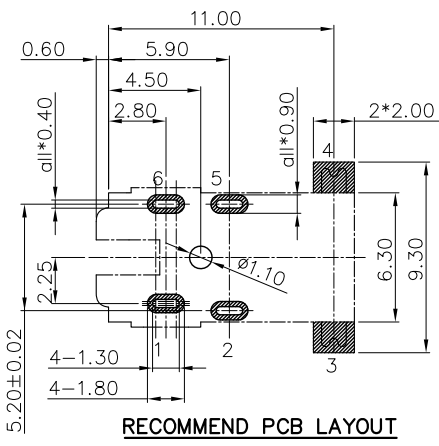
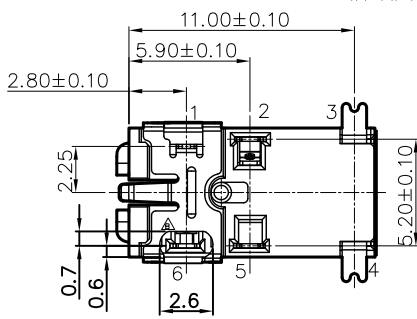
- INSERTION FORCE: 2 KG MAX.
- WITHDRAWAL FORCE: 0.8 KG MIN.DURABILITY AFTER 0.4KG MIN
- CURRENT RATING : 1 A. MAX.
- DIELECTRIC WITHSTANDING VOLTAGE : 500V AC R.M.S. FOR 1 MINUTE.
- INSULATION RESISTANCE : 1000MΩ MIN.AT 500V DC.
- CONTACT RESISTANCE : 30mΩ MAX.
- OPERATING TEMPERATURE : -30°C TO +85°C.
- DURABILITY: 5000 CYCLES

PART NUMBER INFORMATION :

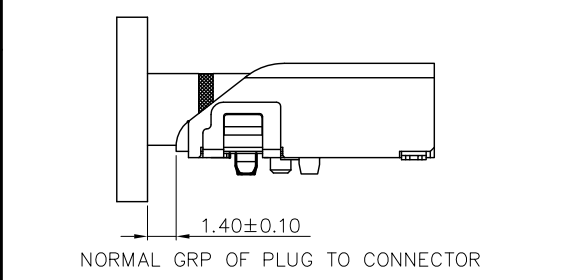
507F206-X0001A-R



THE RECOMMENDED MATING PLUG



RECOMMEND PCB LAYOUT
TOLERANCE: ±0.05
TOP VIEW

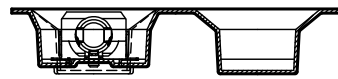
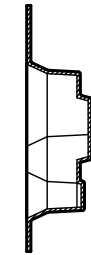
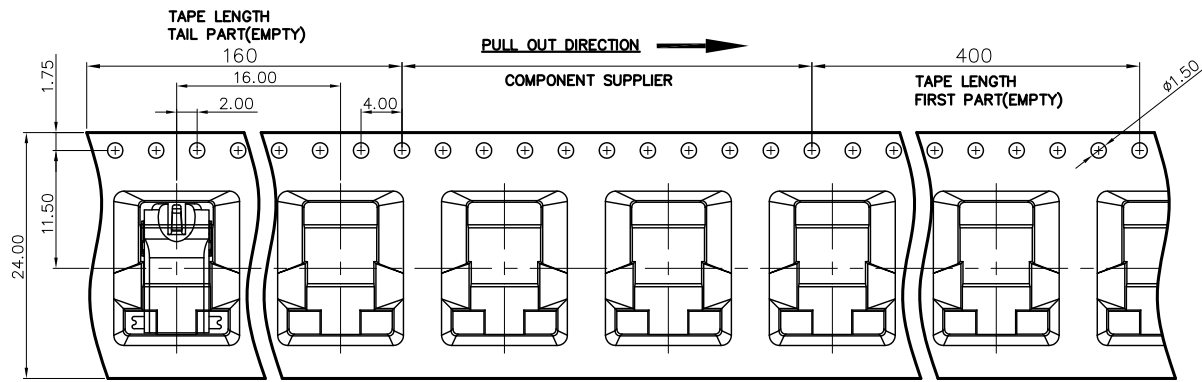


NORMAL GRP OF PLUG TO CONNECTOR

DESCRIPTION OF PLATING ON TERMINALS			
NO.	EXPLAIN	NO.	EXPLAIN
0	GOLD FLASH (2u")	3	GOLD 15u"
6	GOLD 30u"		

TOLERANCE .0=±0.25 .00=±0.15 .000=±0.05 ANG.=±3'	DRAWER 2F BRJL10 CHECK JONV APP'D BRJAN	 ASTRON TECHNOLOGY CORP. NAME PHONE JACK BOARD TYPE #3.5 DRAW NO. R507F206-00001A-R
	UNITS : mm SCALE NONE SIZE A7 SHEET 1 OF 2 REV. E	

REV.	DESCRIPTION	DATE
C	N13'04040	APR 26, 2013
D	N13'05063	May 28, 2013
E	N13'11041	Nov 28, 2013



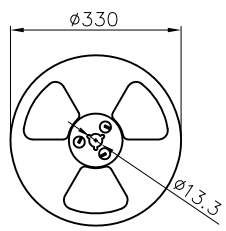
TAPE & REEL PACKAGE:

MATERIALS

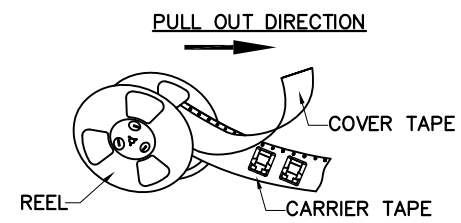
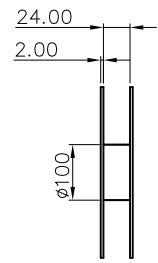
- 1.CARRIER TAPE: PS
- 2.COVER TAPE: PET
- 3.REEL: PS

QUANTITY

- 1.650PCS PER REEL
- 2.10 REEL PER CARTON(6500PCS PER CARTON)



REEL FOR CARRIER TAPE



TOLERANCE		DRAWER		Astron ASTRON TECHNOLOGY CORP.
.0=±0.25		27 BR3HA0		
.00=±0.15		CHECK		
.000=±0.05		PTONY		NAME
ANG.=±3'		APP'D		
		BRJAN		PHONE JACK BOARD TYPE #3.5
		PRODUCT SPEC.		DRAW NO.
UNITS : mm				R507F206-00001A-R
SCALE NONE	SIZE A7	SHEET 2 OF 2	REV. E	